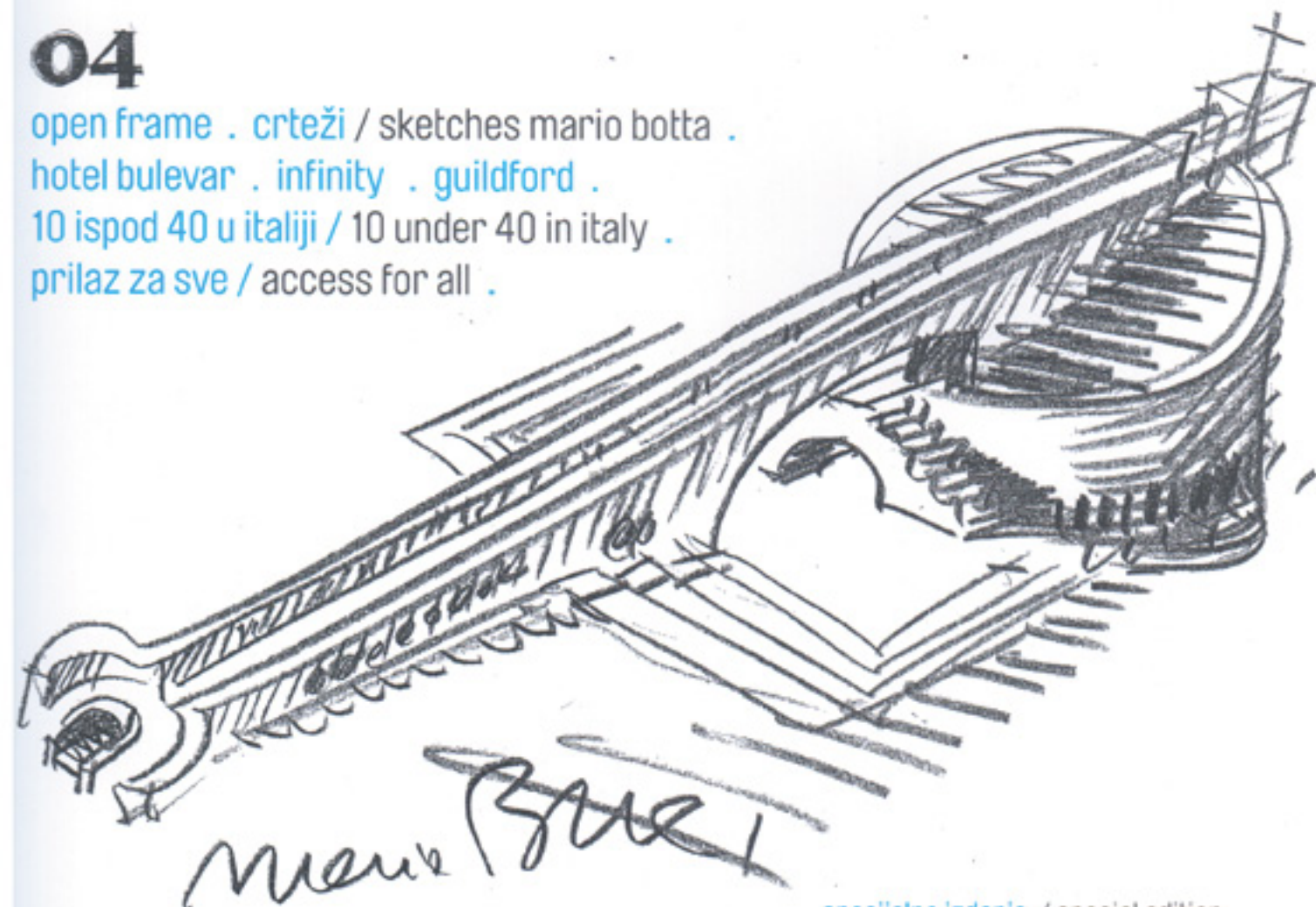


# arhitekt**o**nton

builder of illusions  
graditelj iluzija

04

open frame . crteži / sketches mario botta .  
hotel bulevar . infinity . guildford .  
10 ispod 40 u italiji / 10 under 40 in italy .  
prilaz za sve / access for all .



specijalno izdanje / special edition

*infinity*

ISSN 1821-2476



9 771821 247004

Projekat: Hotel u Bulevaru  
kralja Aleksandra, Beograd.

Projektovano: 2007. god.  
Autor i glavni projektant:  
Dipl.Ing.Arh. Mustafa Musić  
Projektanti: Dipl.Ing.Arh. Ela Nešić  
Dipl.Ing.Arh. Vanja Panić  
Dipl.Ing.Arh. Danilo Nedeljković

Projektni biro: «ZENIT – inženjering»,  
Beograd

Arhitektura sama po sebi može predstavljati glavnog proklamatora uspešnog grafičkog dizajna. Razlog je jednostavan. Prezentacija grafičkog dizajna u arhitekturi se dešava u tri dimenzije a ne u jednoj ravni kako smo to najčešće u prilici da vidimo. Kada u savremenoj arhitekturi imamo objekat jednostavne kubične forme ili kombinaciju takvih formi, ono što se izdvaja kao arhitektonski kvalitet je jednodimenzionalna obrada fasada. Takav slučaj arhitekta Mustafe Musića je hotel Bulevar. Mustafa Musić svojom arhitekturom, koju stvara već oko 35 godina, ostvaruje značajne pomake u percepiranju savremene arhitekture u Srbiji. Izdvaja se kao neko ko nije podlegao lokalnim negativnim uticajima.

Objekat koji vam predstavljamo je rešenje za hotel u Beogradu, i karakteristično je po tome što autor na jednostavan način uspeva da napravi efektne elemente uz korišćenje dvostruke fasade od kojih je prva ima elemente scenografskog, kao i već pomenutog grafičkog izražavanja.

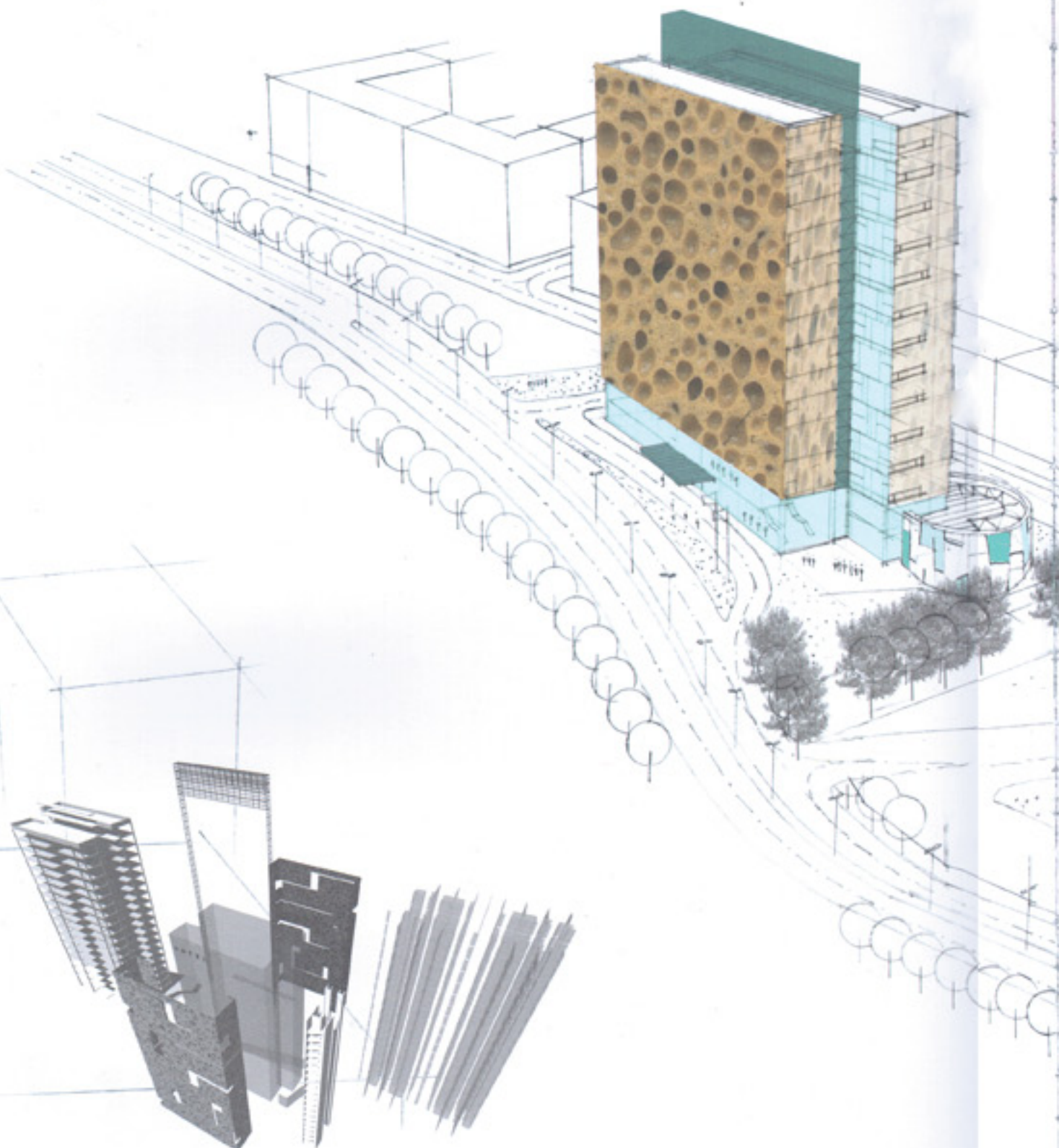
# hotel bulevar

O svojoj ideji autor kaže:

„Primarna volumetrija objekta derivirana je iz relativno jednostavnog kompozicionog postupka, koji podrazumeva smicanje dva identična prizmatična tela, najpre u horizontalnom, a zatim i u vertikalnom smislu.

Predložena arhitektonska struktura koja uobličuje program hotela viđena je pre svega kao gradski vizuelni reper – izrazita vertikala sa skulpturalnim atributima. Arhitektonsko oblikovanje i materijalizacija akcentuju karakter posebnosti objekta kako po mestu, tako i po funkciji koja to podrazumeva. Dvostruka fasada s toga zadovoljava ne samo pomenutu intenciju, već i u funkcionalnom smislu gradi semipermeabilnu membranu, prema vrevi saobraćaja bulevara.“





Design: Hotel in Kralj Aleksandar Boulevard, Belgrade

Designed: in 2007

Author and project designer:

BSc Architecture Mr Mustafa Musić

Designers: BSc Architecture Ms Ela Nešić

BSc Architecture Ms Vanja Panić

BSc Architecture Ms Danilo Nedeljković

Project Bureau: «ZENIT – engineering», Belgrade

The architecture itself may present the main proclaimer of a successful graphical design. The reason for this is simple. Graphic design presentation in architecture develops in three dimensions not in one plane as we are used to see in most cases. When the object of a simple cubic form or a combination of those forms is perceived in contemporary architecture, the architectonic quality which stands out is one-dimensional façade. Example for this is the hotel Boulevard, designed by Mr Mustafa Musić, the architect. Mr Mustafa Musić accomplishes significant shifts in perception of a contemporary architecture in Serbia, by his architecture which he has been developing for approximately 35 years. He differs from others as someone who did not succumb to the local negative influences.

The object which we present is a solution for the hotel in Belgrade and it is characteristic for the reason that the author succeeds in a simple way to make effective elements while using twofold façade where the first one has elements of screenery, as well as the abovementioned graphical expression.

The author says about his idea the following:

„Primary volumetry of the object is derived from relatively simple compositional method which means shearing of two identical prismatic shaped objects, first horizontally and then vertically.

Proposed architectural structure which shapes the hotel program has been perceived as a town visual sign – a significant vertical with accompanying sculptural attributes. Architectural shaping and materialization put an accent on the character of the object's specificity by its location as well as its function which goes along. Double fold façade supports not only the above mentioned intention but builds a semi-permeable membrane, in functional sense, towards traffic turbulences coming from the boulevard.”